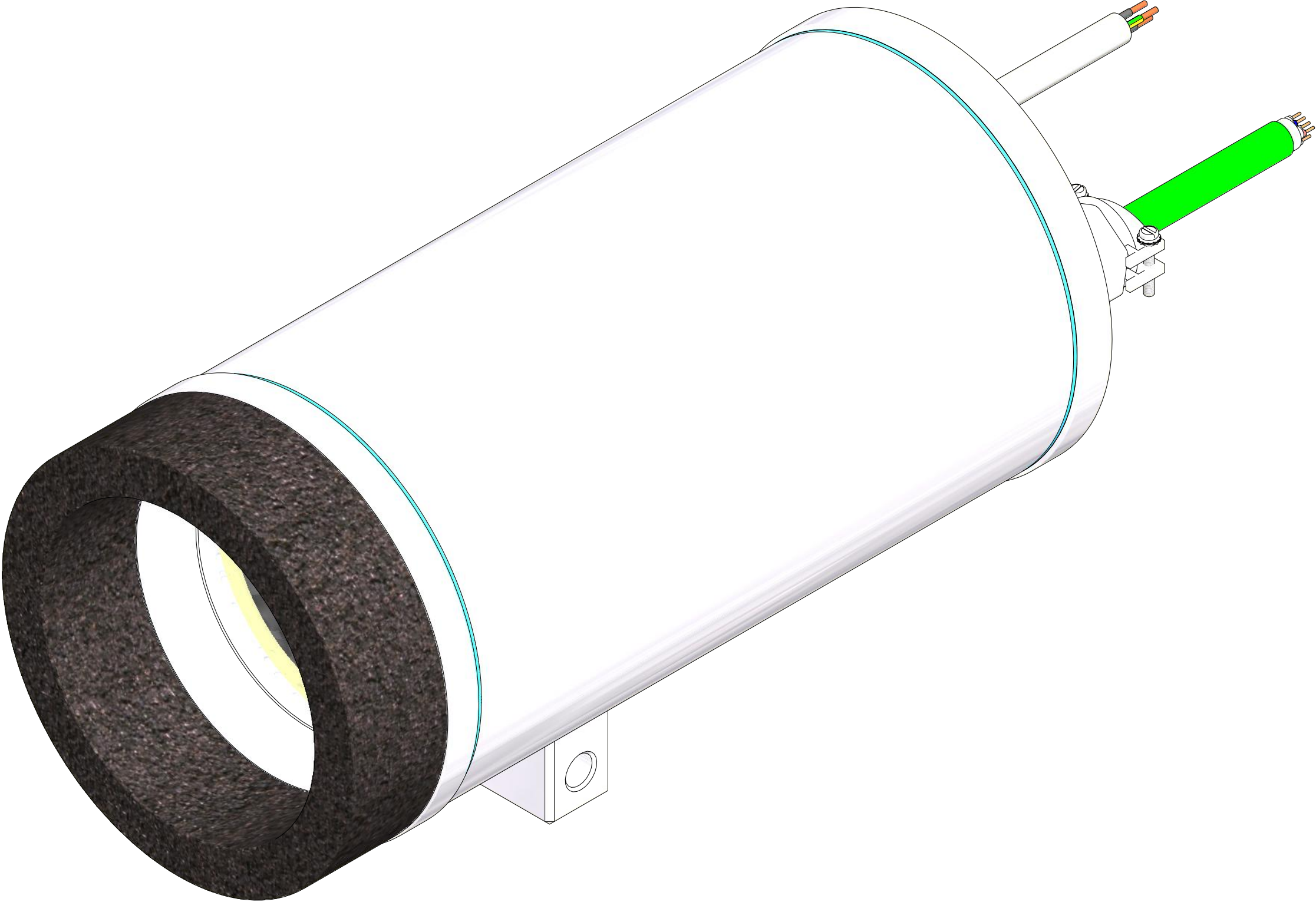


thermoisolation "TI-VA2.x"

(for decoupling the stainless steel housing from heat and cold sources)



Chloropren-Kautschuk CR4100/ Z-150
weight: 20g
surface finishing: foamed, water-jet cut



(application) user manual, customer documentation, system design engineer				(perm. deviation) tolerance class: f according to ISO 2768-1 tolerance class: H according to ISO 2768-2		(surface quality) n.a.	(scale) 1 : 2	(weight) n.a.
				date 15.07.2016	name T.Gruber	(designation) ExCam IPM1145-(L) equipment <small>(see notes in the technical drawing)</small>		
				checked		(drawing-no.) 160715-TAU-TG-T08 ExCam IPM1145-(L) equipment shapes_rev.00.dwg		
				standards	material/ accessories specifically	7 A2		
state	revision	date	name					