

RoughCam® IPM1145



Compact HDTV Day & Night Varifocal Lens Camera with Remote Zoom and Remote Focus

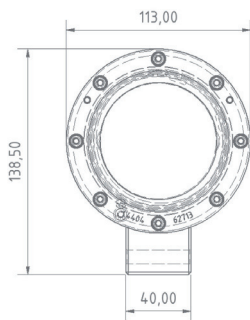
Features.

- ✓ 1920x1080 (HDTV 1080p)
- ✓ Day & Night functionality
- ✓ Dynamic and modular PTC heating concept for arctic temperatures (-60°C)
- ✓ One-cable-wiring (PoE+) IEEE 802.3af/at
- ✓ P-Iris control
- ✓ Remote Focus and Remote Zoom
- ✓ Internal SD-card storage
- ✓ The optional pneumatic enclosure cooling system „cool.Jacket“ allows the use at high temperatures: „High Definition meets High Temperatures“

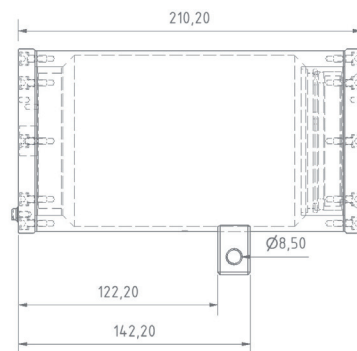


Dimensions.

T10-VA2.1 .X.X Front view



Left side view



Models.

T10-VA2.1.K1.BOR-XXX-X-X

- N = Normal Temp. (0°C to +40°C)
- L = Low Temp. (-30°C to +40°C)
- LL = Low Low Temp. (-60°C to +40°C)
- H = High Temp. (0°C to +70°C)*1
- LH = High Temp. (-30°C to +70°C)*1
- P = Plug RJ45 cable connector
- K = Terminal cable connection
- = Length of cable pig tail in meter (005 to 100)
- BOR = Borosilicate glass flange
- K1 = Cable gland rectangular on rear flange
- VA2.1 = Stainless steel enclosure
- T10 = Camera type no. 10



Mechanical characteristics

Housing material:
Protection level:
Weight:

Stainless Steel 1.4404 (AISI 316L) or optional 1.4401 / 1.4301
IP 68 (IEC / EN 60529)
T10-VA2.1.K1.BOR...: 4700 g



Range of temperature

T10-VA2.1.X.BOR-XXX-X-N:
T10-VA2.1.X.BOR-XXX-X-L:
T10-VA2.1.X.BOR-XXX-X-LL:
T10-VA2.1.X.BOR-XXX-X-H:
T10-VA2.1.X.BOR-XXX-X-LH:

0°C to +40°C
-30°C to +40°C
-60°C to +40°C
0°C to +70°C*1
-30°C to +70°C*1



Electrical characteristics

Power supply:

Power over Ethernet IEEE 802.3af/802.3at
Class 2, Max. 6.0 W

Connection cable

Outside diameter:
Twisted pair structure (data):

9.1 ± 0.2 mm
4 x 2 x AWG22/1 CAT.6a



Lens

Type:

Varifocal, P-Iris 3-10.5 mm
F1.4 with built-in IR-cut filter and motorized focus/zoom
Horizontal angle of view:
Minimum illumination:

95° - 34° @ 16/9
Color: 0.4 lux, F1.4, B/W: 0.08 lux, F1.4



Camera

Image sensor:
Shutter time:

Progressive scan RGB CMOS 1/2.9"
Power line frequency 50 Hz: 1/28000s to 2s,
Power line frequency 60 Hz: 1/33500s to 2s
H.264 (MPEG-4 Part 10/AVC), Motion JPEG
1920 x 1080 (approx. 2 Megapixel) to 160 x 90
Rated frequency 50 Hz: 25 fps, Rated frequency 60 Hz: 30 fps
Digital PTZ, Remote Focus, Remote Zoom
Multiple, individually configurable streams in H.264 and Motion JPEG
Controllable frame rate and bandwidth VBR/CBR H.264
Compression, Color, Brightness, Sharpness, Contrast,
Whitebalance, Backlightcompensation, Mirroring of images,
Rotation – including Corridor Format, Text and imageoverlay,
Privacy mask, Rotation: 0°, 90°, 180°, 270°
Wide Dynamic Range - Dynamic Contrast, Exposure control,
Exposure zones, Fine tuning of behavior at low light
SD/SDHC memory card slot, supporting memory card up 64GB (card not included)
Support for recording to network share (network-attached storage or file server)



Video compression:
Resolutions:



Frame rate H.264 / Motion JPEG:
Pan/Tilt/Zoom:
Video streaming:

Image settings:

Edge storage:



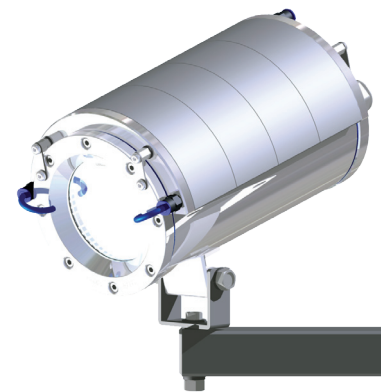
Network

Security:
Supported protocols:

Application Programming Interface:

Intelligent video:
Alarm triggers:
Alarm events:

Password protection, IP address filtering, HTTPS* encryption, digest authentication, user access log
IPv4/v6, HTTP, HTTPS*, QoS Layer 3 DiffServ, FTP, SMTP, Bonjour, UPnP, SNMPv1/v2c/, v3(MIB-II), DNS,
DynDNS, NTP, RTSP, RTP, TCP, UDP, IGMP, RTCP, ICMP, DHCP, ARP, SOCKS
Open API for software integration, including supporting the ONVIF S specification available at
www.onvif.org, as well as VAPIX® from Axis Communications, specifications available at www.axis.com
Video motion detection, active tampering alarm
Intelligent video
File upload via FTP, HTTP and email notification via email, HTTP and TCP
Video recording to edge storage



© SAMCON cool.Jacket @ RoughCam IPM114x

* 1: These models require the SAMCON cool.Jacket. The compressed air according to the requirements must be available or be produced.