

# RoughCam® IPM1145-L



Compact HDTV Day & Night Varifocal Lens Camera with RemoteZoom, RemoteFocus, Infra Red Cut Filter and Infra Red LED

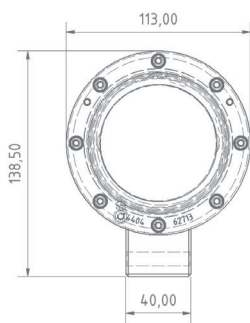
## Features.

- ✓ 1920x1080 (HDTV 1080p)
- ✓ Day & Night functionality
- ✓ Dynamic and modular PTC heating concept for arctic temperatures (-60°C)
- ✓ One-cable-wiring (PoE+) IEEE 802.3af/at
- ✓ Built-in IR LEDs and OptimizedIR
- ✓ P-Iris control
- ✓ Remote Focus and Remote Zoom
- ✓ Internal SD-card storage
- ✓ The optional pneumatic enclosure cooling system „cool.Jacket“ allows the use at high temperatures: „High Definition meets High Temperatures“

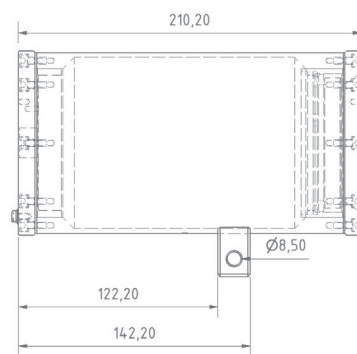


## Dimensions.

T10-VA2.1.X.X Front view



Left side view



## Models.

T10-VA2.1.K1.BOR-XXX-X-X

- N = Normal Temp. (0°C to +40°C)
- L = Low Temp. (-30°C to +40°C)
- LL = Low Low Temp. (-60°C to +40°C)
- H = High Temp. (0°C to +60°C)\*1
- LH = High Temp. (-30°C to +60°C)\*1
- P = Plug RJ45 cable connector
- K = Terminal cable connection
- = Length of cable pig tail in meter (005 to 100)
- BOR = Borosilicate glass flange
- K1 = Cable gland rectangular on rear flange
- VA2.1 = Stainless steel enclosure
- T10 = camera type no. 10



## Mechanical characteristics

Housing material:  
Protection level:  
Weight:

Stainless Steel 1.4404 (AISI 316L) or optional 1.4401 / 1.4301  
IP 68 (IEC / EN 60529)  
T10-VA2.1.K1.BOR...: 4600 g



## Range of temperature

T10-VA2.1.X.BOR-XXX-X-N:  
T10-VA2.1.X.BOR-XXX-X-L:  
T10-VA2.1.X.BOR-XXX-X-LL:  
T10-VA2.1.X.BOR-XXX-X-H:  
T10-VA2.1.X.BOR-XXX-X-LH:

0°C to +40°C  
-30°C to +40°C  
-60°C to +40°C  
0°C to +60°C\*1  
-30°C to +60°C\*1



## Electrical characteristics

Power supply:

Power over Ethernet IEEE 802.3af/802.3at  
Class 3, max. 10.5 W

## Connection cable

Outside diameter:  
Twisted pair structure (data):

9.1 ± 0.2 mm  
4 x 2 x AWG22/1 CAT.6a



## Lens

Type:

Varifocal, P-Iris 3-10.5 mm  
F1.4 with built-in IR-cut filter  
and motorized focus/zoom  
Ca. 75° - 34° @ 16/9  
0 lux with activated IR illumination (ca. 8 m)  
Color: 0.4 lux, F1.4, B/W: 0.08 lux, F1.4

Horizontal angle of view:  
Minimum illumination:



## Camera

Image sensor:  
Shutter time:

Progressive scan RGB CMOS 1/2.9"  
Power line frequency 50 Hz: 1/28000s to 2s,  
Power line frequency 60 Hz: 1/33500s to 2s  
H.264 (MPEG-4 Part 10/AVC), Motion JPEG  
1920 x 1080 (approx. 2 Megapixel) to 160 x 90  
Rated frequency 50 Hz: 25 fps, Rated frequency 60 Hz: 30 fps  
Digital PTZ, Remote Focus, Remote Zoom  
Multiple, individually configurable streams in H.264 and Motion JPEG  
Controllable frame rate and bandwidth VBR/CBR H.264  
Compression, Color, Brightness, Sharpness, Contrast,  
Whitebalance, Backlightcompensation, Mirroring of images,  
Rotation – including Corridor Format, Text and imageoverlay,  
Privacy mask, Rotation: 0°, 90°, 180°, 270°  
Wide Dynamic Range - Dynamic Contrast, Exposure control,  
Exposure zones, Fine tuning of behavior at low light  
SD/SDHC memory card slot, supporting memory card up 64GB (card not included)  
Support for recording to network share (network-attached storage or file server)



Video compression:

Resolutions:  
Frame rate H.264 / Motion JPEG:



Pan/Tilt/Zoom:  
Video streaming:

Image settings:

Edge storage:



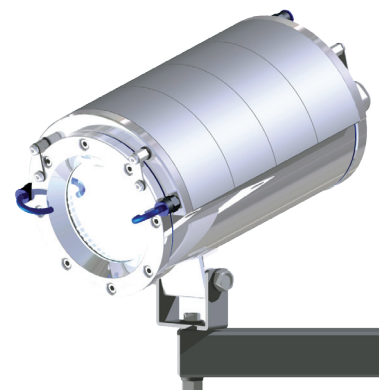
## Network

Security:  
Supported protocols:

Application Programming Interface:

Intelligent video:  
Alarm triggers:  
Alarm events:

Password protection, IP address filtering, HTTPS\* encryption, digest authentication, user access log  
IPv4/v6, HTTP, HTTPS\*, QoS Layer 3 DiffServ, FTP, SMTP, Bonjour, UPnP, SNMPv1/v2c, v3(MIB-II), DNS,  
DynDNS, NTP, RTSP, RTP, TCP, UDP, IGMP, RTCP, ICMP, DHCP, ARP, SOCKS  
Open API for software integration, including supporting the ONVIF S specification available at  
www.onvif.org, as well as VAPIX® from Axis Communications, specifications available at www.axis.com  
Video motion detection, active tampering alarm  
Intelligent video  
File upload via FTP, HTTP and email notification via email, HTTP and TCP  
Video recording to edge storage



© SAMCON cool.Jacket © RoughCam IPM114x

\* 1: These models require the SAMCON cool.Jacket. The temperature class must be reduced to T5.  
The compressed air according to the requirements must be available or be produced.