



SAMCON
Prozessleittechnik GmbH

Assembly Instruction

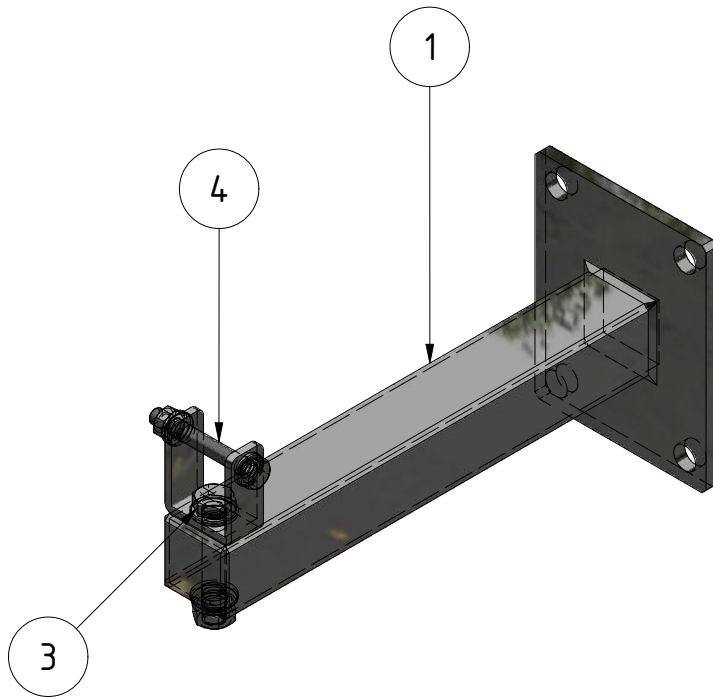
product: WMB-VA1.x
author: S. Weber
date: Oct. 22, 2018
doc ID: 191022-PZUMA-SW-WMB-VA1.x_assembly
instruction_rev.oo.idw
passing:



INTRO



What you need:	
Wrench	13mm
Torque wrench	13mm



ATTENTION:
Please be careful when working at heights !

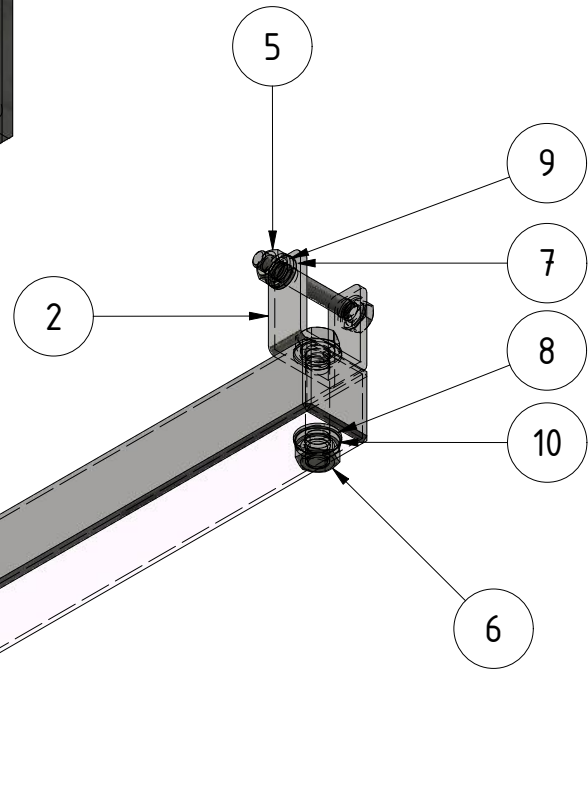
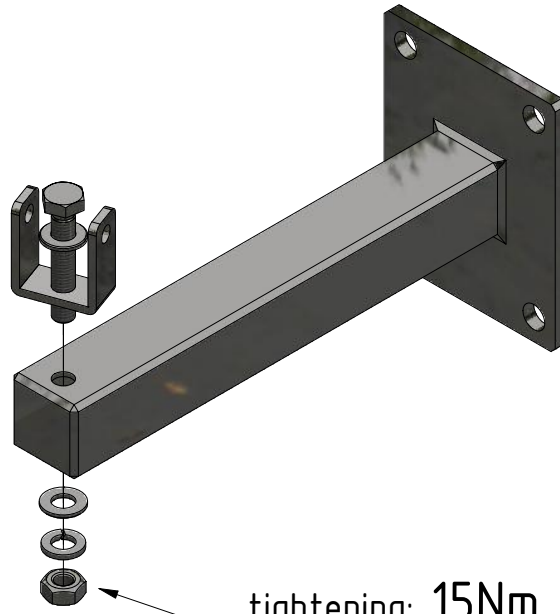


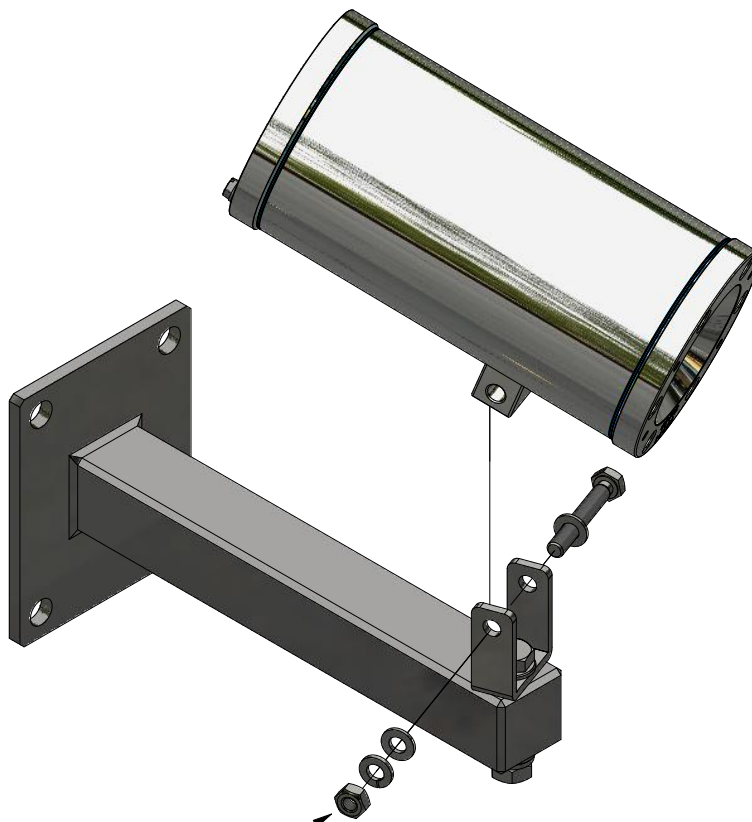
Table of content			
obj.	qty.	part	material
1	1	WMB-VA1.x	stainless steel
2	1	WMB-VA1.x fastening sheet	stainless steel
3	1	Threaded bolt DIN 933 - M8 x 45	stainless steel
4	1	Threaded bolt DIN 933 - M6 x 45	stainless steel
5	1	Nnut ISO 4032 - M6	stainless steel
6	1	Nnut ISO 4032 - M8	stainless steel
7	2	Washer DIN 433 - 6,4	stainless steel
8	2	Washer DIN 433 - 8,4	stainless steel
9	1	Washer DIN 7980 - A6	stainless steel
10	1	Washer DIN 7980 - A8	stainless steel

1



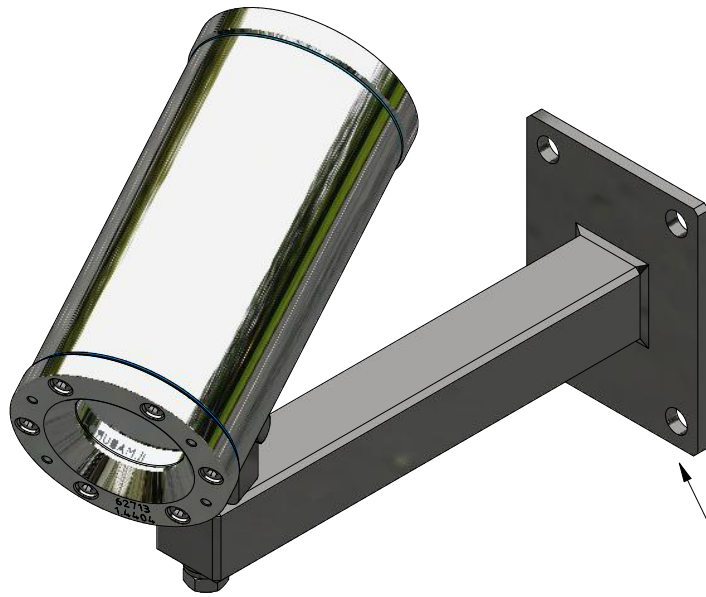
tightening: 15Nm

2



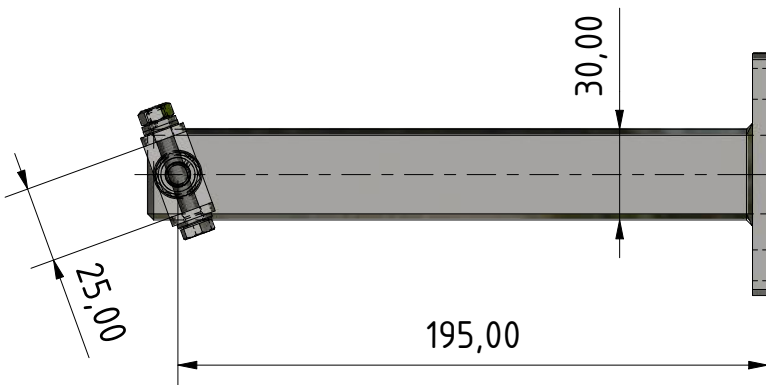
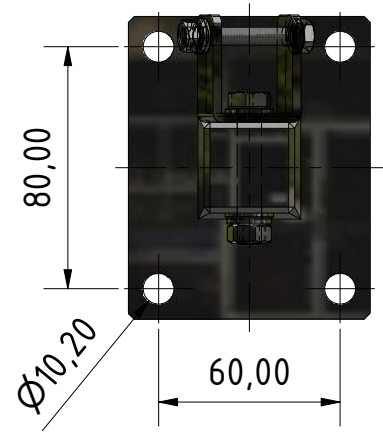
tightening: 6Nm

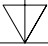
3



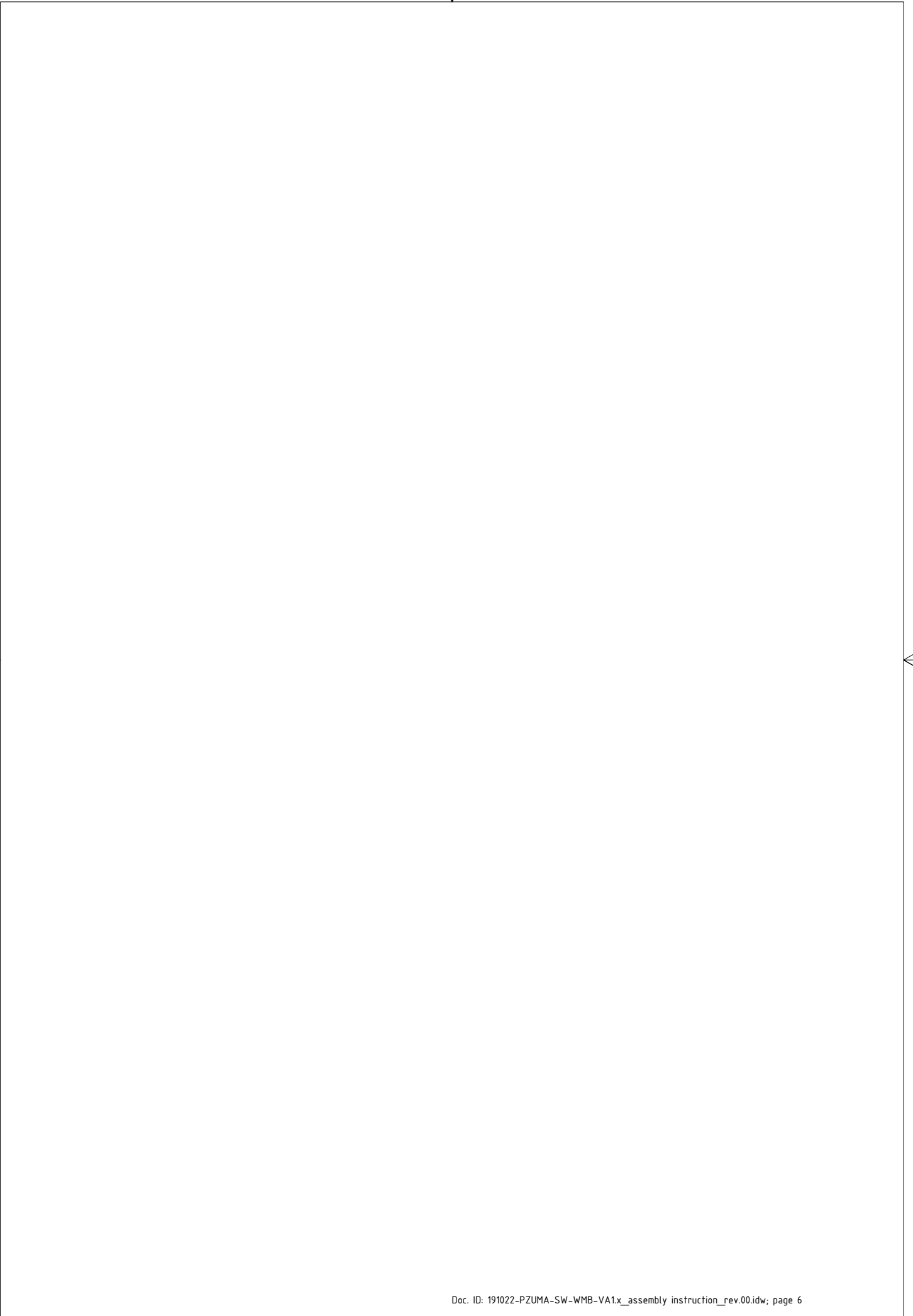
*Fasten to wall or to
PMB (pole mount bracket) !*

4





Note:
For more information see
other assembly instructions!







SAMCON

Prozessleittechnik GmbH

