

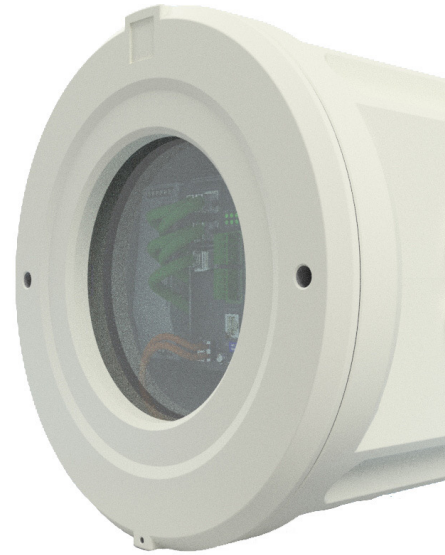


# ExConnection Rail<sup>®</sup> 4-Port PoE++

## Datasheet.

### Features.

- ✓ ATEX, IECEx and EAC-Ex Certification for Hazardous Areas
- ✓ Managed High Power-PoE++-Switch
- ✓ 60W per Port, 240W Power Budget
- ✓ Flameproof Enclosure for Wall Mount
- ✓ Protection Level IP 66
- ✓ Use even at Low Temperatures (-40°C)



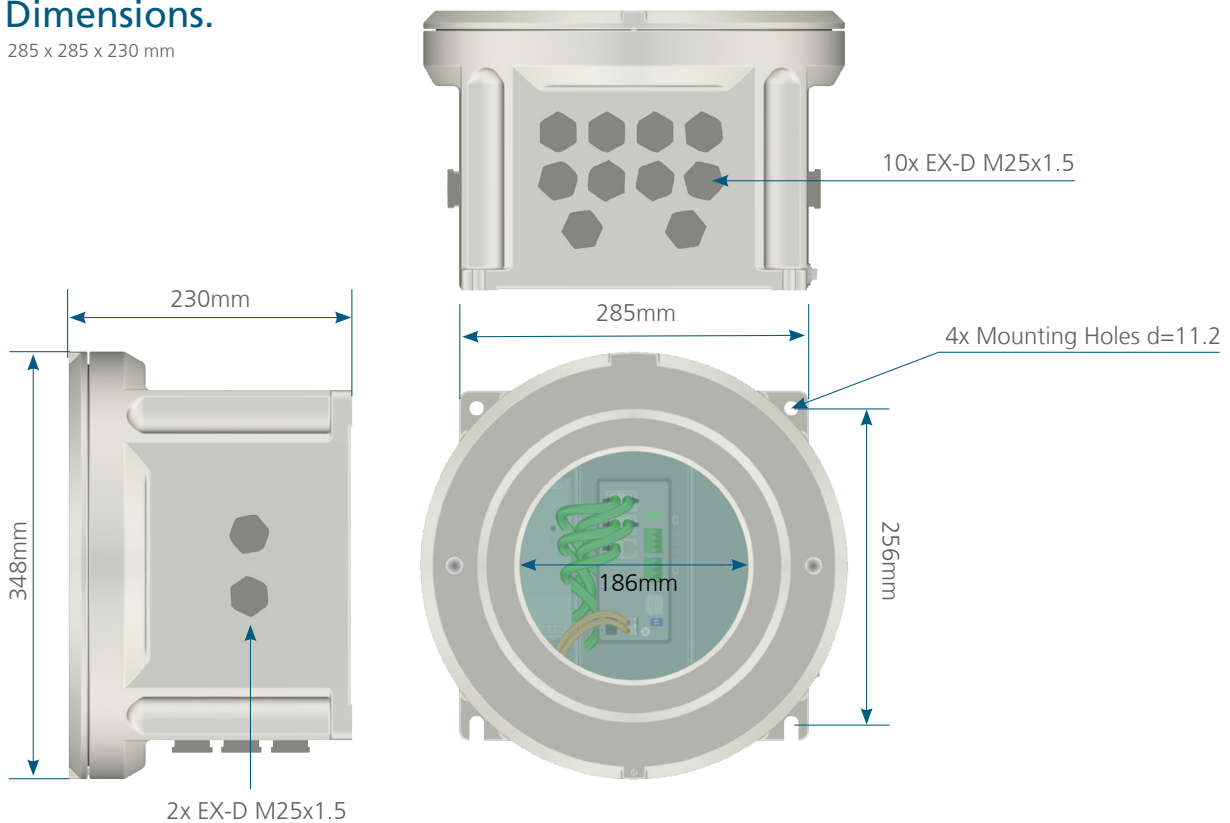
### Zone.

Groupe I (Mining) category	ATEX / IECEx / EAC-Ex		Groupe II (Gas & Dust) Zone	ATEX / IECEx / EAC-Ex				
	Ma	Mb		0	1	2	21	22
For use in	✗	✗	For use in	✗	✓	✓	✓	✓

Further certificates upon request.

### Dimensions.

285 x 285 x 230 mm



# ExConnection Rail® 4-Port POE++



## Data.



### Explosion protection

Model key:  
Declaration of conformity:





Ex- Certificates:



Ex- Marking:  
Explosion protection (gas):  
Explosion protection (dust):

T04.5-D.BOR-4PoE++-1000Base-XX  
DIN EN/IEC/GOST ... 60079-0, DIN EN/IEC/GOST ... 60079-1,  
DIN EN/IEC/GOST ... 60079-28, DIN EN/IEC/GOST ... 60079-31  
TUEV-10-ATEX-7969X, IECEx-TUR-16.0025X,  
No. TC RU C-DE.AB.61.B.00380/19

 II 2G Ex db [op pr] IIC T5 Gb  
 II 2D Ex tb [op pr] IIIC T95°C Db IP66

Schillerstrasse 17  
D-35102 Lohra-Altenvers

info@samcon.eu  
T: +49 6426 9231-0  
F: +49 6426 9231-31



### Mechanical characteristics

Housing material:

Aluminum, copper-free and sea water resistant

Protection level:

Coated in RAL 7035  
IP66 (IEC/EN 60529)

Weight:

About 21 kg

Side left:

2 blind plug - M25x1.5 spanner size 30

Side right:

2 blind plug - M25x1.5 spanner size 30

Side bottom:

10 blind plug - M25x1.5 spanner size 30



### Environmental conditions

Storage temperatures:

-40°C to +85°C

Range of temperature:

-40°C to +50°C



### Power supply

Input voltage:

100 VAC - 240 VAC

Power consumption:

240 W (max.)

Rated current:

1 A @ 240 VAC (max.), 3 x PT4 terminals (L,N,PE)

Conductor cross-section, solid

min.: 0.2 mm<sup>2</sup>; max.: 2.5 mm<sup>2</sup>

Conductor cross-section, flexible

min.: 0.2 mm<sup>2</sup>; max.: 2.5 mm<sup>2</sup>

### Switch

PoE class:

PoE+ IEEE 802.3at Type 2 Class 4

PoE output:

Up to 60 W per port; Power budget 240 W

Pin assignment:

Power over pairs: port 1-4: 1/2, 3/6, 4/5, 7/8

Connectors:

PoE ports: RJ45 10Base-T/100Base-TX/1000Base-T Mbits/s (4x)

Data ports / Uplink: RJ45 10Base-T/100Base-TX/1000Base-T Mbits/s (2x); SFP port (2x)

Power: Power connector port (2x for power redundancy)

Console: RJ45 (1x)

Surge protection:

6 kV on all network ports

Management software:

AXIS Device Manager

### General approvals

EMC 2014/30/EU:

EN 55032 Class A (Switch); EN 55035 (Switch); EN 550224 (Switch); EN 50121-1 (Switch);  
EN 50121-4 (Switch); EN 61000-6-1 (Switch); EN 61000-6-2; EN 61000-6-3; EN 61000-6-4 (Switch);  
EN IEC 61010-2-201 (PSU)

ROHS 2011/65/EU:

EN 50581 (Switch); EN IEC 63000 (PSU)

LVD 2014/35/EU:

EN 62368-1



### Network uplink

Copper:

2 x 1000BaseTX

Optical fiber connector:

2 x 1000Base-XX ports (SFP Module not included)

### Network downlink (camera channels)

4 x POE++ (IEEE 802.3at/bt, max.60W per port), (RJ45 plug)

### Network

Security:

Password protection; HTTPS encryption; VLAN

Network protocols:

IPv4, IPv6, HTTP, HTTPS, SMTP, Bonjour, UPnP, SNMP v1/v2c/v3, DNS, NTP, RTSP, TCP, UDP, IGMP, ICMP,  
DHCP, ARP, SSH, RADIUS, TACACS+, Syslog, IEE802.1X, 802.1Q (VLAN), LLDP, LLDP-Med, STP, MSTP,  
RSTP, LACP, RRP

Throughput:

11.9 Mpps

Switching capacity:

16 Gbps

MAC table:

8 k

Jumbo frames:

9216 Bytes